

# **DIVISION 1-** **PUREBRED BEEF CATTLE**

**Chairperson - Jamie Felhauer - 250-804-8813**

**email:** jado@telus.net

**Angus:** Tanya Belsham, Allison Speller

**Simmental:** Reanne Sanford, Travis Fisk

**Charolais:**

**Limousin:** Rob Swaan, Erin Kishkin

**Gelbvieh:** Cordy Cox Ellis, Joyce Dawson

**Hereford:** Phil Brown

**Shorthorn:** Gary Woods, Dean Spady

**Lowline:** Laurie Brunsdon, Kevin Tiede

## **ENTRIES CLOSE - FRIDAY, JULY 20<sup>th</sup>**

### **FEATURE BREED 2018: Shorthorn**

**Feature Breed Order:**

SIMMENTAL 2019,	CHAROLAIS 2020,
HEREFORD 2021	LOWLINE 2022
GELBIEH 2023	ANGUS 2024

**JUDGE:** Mike Geddes

**JUDGE:** Colton Hamilton

**JUDGE:** Keith Altwasser

**Beef Photographer:** Grant Rolston Photography Ltd.

Canadian Cattle Identification Agency tags are now **MANDATORY** for all cattle entered in the Interior Provincial Exhibition.

### **LATE ENTRY - BEEF CATTLE**

Beef Cattle entries sent POSTMARKED after Friday July 20 will be processed as a late entry. After July 20 all Class Fees will be DOUBLED. Late entries close July 31 with the exception of substitutions.

Exhibits received in barns **Thursday August 30**

**"NO EXCEPTIONS"** All decorations and signage must be in place by 8:00 am

**ENTRY FEE: \$21.40 per class** unless otherwise stated plus Exhibitor Ticket unless current membership held

Adults & Students	\$ 21.40 (taxes included)
Child (6 to 12)	\$ 5.35 (taxes included)
5 and under	Free.

**Attendants Tickets** may be issued as follows:

Cattle - 1 free exhibitor ticket for each 6 head

### **CAMPING PARKING PASSES:**

**PRIZE MONEY:** 1<sup>st</sup>: \$100, 2<sup>nd</sup>: \$90, 3<sup>rd</sup>: \$75, 4<sup>th</sup>: \$60, 5<sup>th</sup>: \$55, 6<sup>th</sup>: \$50, 7<sup>th</sup>: \$40, 8<sup>th</sup>: \$35, 9<sup>th</sup>: \$25, 10<sup>th</sup>: \$20  
**Ribbons to 3<sup>rd</sup> Place only.**

### **QUALIFYING EVENTS**

**Royal Bank Beef Supreme Challenge**

**B.C. Angus Gold Show**

**Mark of Excellence Hereford Show**

### **Judging Times Agriplex:**

#### **Friday, August 31**

Junior Beef Show - 8:00 am Multi Breed - 1:00 pm

Simmental - 1:00 pm

#### **Saturday September 1**

Angus Gold Show - 9:00 am, Hereford - 9:00 am,

Lowline - 1:00 pm, Shorthorn -1:00 pm,

**Lowline Futurity 3:30 pm**

#### **Sunday September 2** Jackpot Heifer Show-

**9:00 am and continuing in order**

Futurity Show - Stars of the Future,

Sires of Tomorrow: All Breed Bull Calves,

Jackpot Steer, Supreme Champion Show,

All Breeds Herdsman awards

## **EXHIBITOR INFORMATION**

**NO DOGS ALLOWED ON FAIRGROUNDS  
(EXCEPTION)**

**SERVICE AND DEMONSTRATION DOGS ONLY**

### **SHOW OFFICE**

The hours of the IPE Office will be 8:00 am - 10:00 pm

Monday August 27, to Sunday September 2

The IPE Office number is (250) 546-9406.

**NSF CHEQUES:** There will be a \$25.00 charge on all NSF cheques.

**PLEASE NOTE THAT ALL BUILDINGS ON THE IPE  
GROUNDS ARE SMOKE FREE.**

### **Alcohol Consumption:**

The consumption of alcoholic beverages on IPE premises at any time is strictly prohibited except in designated licensed areas. Persons found consuming alcohol outside of licensed areas will face instant dismissal from this and future shows.

**SUPPLIES:** Shavings will be made available. Hay will be available for purchase on site, straw will be allowed in the beef aisles of the cattle barns. Stock piling of feed is limited to that which can be stored in the feed alley. NO feed is to be piled in the cross alleys. Exhibitors are required to provide their own feed boxes and pails. all vehicles must be off the IPE grounds by 9 am daily

No Exhibits or stall displays to be removed until after 8 pm Sunday September 2 with a staggered move out. Removal of either by exhibitor will result in forfeiture of all prize money. Exhibitors are invited to stay Sunday night Enjoy the rodeo and midway and leave Monday morning.

**B  
E  
E  
F**

**RULES**

**SPECIAL ATTENTION** is called the General Rules and Regulations printed at the beginning of the Prize list. Failure to abide by IPE rules may result in disqualification, forfeiture of prize money and possible disbarment from the fair.

**NOTE:** For the safety of the fair going public unruly animals will be removed from the grounds at the owners expense.

**B.C. Angus Gold Show Rules:**

The 2018 Interior Provincial Exhibition Purebred Angus Show will be a B.C. Angus Gold Show and will be carried out under the rules of the breed Association. Rules of Special note are:

- a) A minimum of 30 head must be registered in the Gold Show for the show to qualify
- b) Anyone showing in the Gold Show must have their 2018 calves tagged with Canadian Angus Ranchers Endorsed RFID tags.
- c) Animals competing in the Gold Show must have a Canadian Angus Association registration number at the **TIME** of judging. Unregistered, pending or "applied for " animals will not be awarded points and will not be eligible for the awards.
- d) Animals born in or after 2012 Must had a CCIA "Angus Tag" in order to qualify for points
- e) Effective February 2010 the Canadian Angus Association has ruled that they will promote good environmental practice for cattle and cattlemen. Any animal with colour products applied to it in a Canadian Angus Association sponsored show will be disqualified from the show.
- f) Exhibitors are required to dress in a black vest and white shirt in the show ring

**01. LIABILITY:**

1.1 General:

The exhibitor will be solely responsible for any loss, injury or damage done to, occasioned by, caused by, or arising from or indirectly relating to, any animal or article exhibited by the exhibitor, and shall save harmless and indemnify the IPE against all legal or other proceedings in relation to this loss, injury or damage, in regard thereto.

**02. ENTRIES:**

**2.1 Registration:** All Canadian animals entered in purebred classes must be registered as purebred at the time of entry, in the Association/Breed registry that is operating under and recognized by the Animal Pedigree Act of Canada. Exhibitors must produce the original certificate of registration in the owner's name upon arrival to the identification representative or barn boss. Exhibited purebred animals from the United States must be registered in the recognized American registry for the breed and need not be registered in Canada, but must be Canadian registrable.

A photocopy of the registration certificate must accompany the entry form. Original registration certificate must be presented to appropriate association representative upon arrival at the IPE With exception to calendar year calves, they must be clearly tattooed & registration applied for. Please send in photocopy of application. PURSUANT TO CANADIAN RULES, If Office does not receive photocopy of application, no prize money will be paid for that animal.

**2.2 Ownership and Leasing:**

At the time of submitting the entry form, the exhibitor named must be the registered owner /lessee of each animal listed on that entry form. A copy of the Association Lease papers must accompany the entry form for all Leased animals. The breeder of the animal will be the person(s) recorded as such on the registration certificate. An animal owned jointly by more than one individual, firm or institution must be registered in the names of the joint owners, In the event that one of the joint owners is the breeder of the animal, the animal may be entered in a group class requiring bred and owned. Animals jointly owned must be listed on a separate form under the joint owner's names.

**2.3 Maximum Entries:**

Maximum of 10 exhibits plus two 4-H calves per breeding unit. (Excluding Breeder's Herd and Get of Sire classes). Such additional 4-H calves will NOT be eligible for Breeders Herd or Get of Sire classes.

**2.4 4-H Registered Heifers:**

Registered beef heifers may be shown by entry in the usual manner, in open class in the breed provided the heifer is the registered property of the 4-H member. See Rule 2.2.

**2.5 Entry Fees:**

All entry fees must be made payable to the IPE and must be delivered with the entry forms on or before the entry closing date. Entries received without entry fees will be returned. Entry fees will not be refunded after the entry closing day July 20 (only exception is clause 2.14)

**2.6 Entry forms:**

All entries must be prepared on forms supplied in clear legible writing, printed or typed. The exhibitor or his duly authorized agent must sign all forms. All registration and qualification certificate numbers must be shown on entry forms, On failure to do this the animal will not be allowed in the judging ring.

**2.7 Errors:**

The IPE is not responsible for any errors contained in the entry forms. Reasonable efforts will be made by office staff to contact exhibitors prior to entry closing date should any errors be detected.

**2.8 Refusal of Entries:**

The IPE reserves the right to refuse any entry for any reason and to return any fee without being liable for compensation. Entry packages and entry fee(s) received after the closing date will be returned subject to clause 2.14.

**2.9 Show Numbers:**

Show harness to be worn by the Exhibitor to carry numbers. All entries in livestock classes will be listed in the show catalogue and a number will be assigned to each entry. When in the ring exhibitors must wear the show number.

**2.10 Classes:**

Classes may be split at the discretion of the breed show committee, when the number exceeds 15. The top 5 animals in each split class will return to the ring for final placing. All animals will be listed in each class by age, youngest to oldest. There is no restriction on the numbers of animals an exhibitor can enter in a show or class (except Breeders Herd where only one entry per exhibitor or breeding unit will be accepted).

**2.11 Cow/Calf Classes:**

The heifer calf is eligible to be shown as a single animal in the heifer class and in the cow/calf class as a unit. If either entry is named a division champion or reserve, the other entry will be forfeited from the preceding class. Entry fee's will **NOT** be refunded as a result of this rule.

**2.12 Breeding Unit:**

In each classification where related exhibitors are involved in more than one breeding operation, such operations are considered as ONE BREEDING UNIT. In all classes where there is any doubt that more than one breeding unit exists, the interpretation shall be that **ONLY ONE BREEDING UNIT EXISTS**.

The responsibility of proof of separation of breeding units shall rest with the exhibitor(s). For the purpose of the Premier Breeder Award joint breeders are separate entities. In Get of Sire and Progeny of Dam classes, be sure to give full name and registered numbers of Sire and Dam on entry form, at time of making entries.

**2.13 Space allotment & Stalling**

The IPE shall have full discretion to dictate and assign stall space. Stalls will be allotted by the Barn Boss with the actual number of cattle brought to the show. Please make reference to any specific stalling requirements on your entry form and notify the barn boss at jado@telus.net

**2.14 Limited Space available**

Due to limited space entries may be limited priority will be given to entries on the basis of postmark or other proof of delivery. Entry fees will be refunded in full for those herds which we are unable to accommodate.

**2.15 Substitutions:**

Substitutions are only permitted within the **same** calendar year class the original entry was placed in and by the same breeding unit. Substitution must be male animal for male, female animal for female. All substitutions must be presented to the Committee rep of the breed prior to the breed show.

**2.16: Minimum Shows:**

In order for a show to proceed with full prize money, a minimum of 3 exhibitors and **20** head of registered cattle must be entered and **SHOWN**. If 3 exhibitors and less than **20** head but more than **11** head of registered cattle are entered and shown then the show may proceed with 50% prize money. If there are less than 3 exhibitors and less than 12 head of registered cattle then they must show in the Multi Breed Classes. If Multi Breeds **Do Not** achieve minimum show number of 3 exhibitors and **20** head of cattle entered and shown, then the Multi Breed class may proceed but with **reduced** prize money.

**03 JUDGING**

**3.1 Show Regulations**

The showing of livestock will be under the jurisdiction of the particular association which governs that breed of animal. No persons other than judges, the officials and attendants holding animals being exhibited will be allowed in the Show Ring during judging.

**3.2** The decision of the judges shall be final in all cases. After each section is judged, the judge shall sign all judging sheets in the judging book.

**SIMMENTAL**



**From the Pasture  
to the Plate  
Committed to the  
Commercial Cattleman**

*Best wishes and Congratulations  
to all Participants*

Simmental Association of B.C.  
President: Lorne Webster  
Secretary: Reanne Sanford  
Phone (250) 249-5332

The clerk(s) shall see that these sheets are returned to the Show Office as soon as completed.

#### 04 EXHIBITOR MANAGEMENT

##### 4.1 Tampering with Livestock

Unethical fitting of livestock entered for competition is prohibited. Unethical fitting will be deemed to consist of any treatment or operation materially altering the structure or natural conformation, colour, of any part of the animal's body, such as the introduction of hair or a hair substitute, air, liquids, or other substance subcutaneously in any part of the body, surgical operations to correct defects or the performance of any act or operation to exaggerate the natural conformation of the animal. Any tampering, altering or abuse may be reported to the Regulation Infraction Database, North American Livestock & Rodeo Managers Association.

##### 4.2 Clean Up

All stalls must be cleaned before 8 am daily. Exhibitors are requested to keep the aisles and surrounding area clean. When animals are on exhibit, exhibitors or attendants are required to present their livestock in a professional manner. Exhibitors are required to include stall decoration as part of their exhibit so that the exhibits will attract the attention of the public

##### 4.3 Clipping Chutes & Tack Boxes

Clipping or grooming of cattle in the aisles of the barns is prohibited. The Barn Boss will have the full discretion of where the chutes and tack boxes will be located outside the building.

##### 4.4 Electrical Equipment

Exhibitors with fans or other electrical equipment are requested to be sure that the equipment has a proper ground( three wires)

##### 4.5 Arrivals

No vehicles will be allowed to stay on the grounds during move-in or otherwise. Once the vehicle is unloaded the exhibitor shall move it to the designated off site parking lot immediately see rule # 3 Parking & Camping

##### 4.6 Weighing/ Processing,

**Jackpot Steers: Friday August 31 3:30 pm.**

Weighing of all livestock is at the discretion of the Beef Committee. Processing of livestock through the scales will be optional except Jackpot steers or those animals required by the Beef committee. Show cards MUST accompany animals to scales. All substitutions must be presented to the Committee rep of the breed.

##### 4.7 Identification

The Beef Committee Breed Reps will be responsible for the confirmation of C. C. I. A tags within their breed and the verification of any **tattoo numbers** brought into question If the animal is refused entry on that basis it will not be processed

or inspected again and will not be eligible to show, but may remain on display. Corrections or alterations will not be permitted at the show.

**Please check your tattoos prior to the show to ensure that they are legible and correct.**

**C. C. I. A. Tags are now Mandatory on all Cattle Please note: Animals without C.C.I.A TAGS will not be PERMITTED entry onto the IPE grounds**

##### 4.8 Wash Racks

For wash rack usage, priority is given to breeds preparing for their shows.

##### 4.9 Nose Rings:

**HUMBUGS ARE NOT ACCEPTABLE**

All bulls over one (1) year old must have a nose ring. Lead must be on nose ring when leading Bulls.

##### 05 Awards:

##### 5.1 Ribbons:

The IPE provides first (1<sup>st</sup>) to third (3<sup>rd</sup>) place ribbons as well as Grand and Reserve Grand Champion rosettes.

##### 5.2 OPEN BEEF AMBASSADOR TROPHY BUCKLE:

This Trophy buckle will be awarded to a **NON-JUNIOR** Exhibitor who best promotes the Beef Industry through personal presentation and friendliness to the public in the cattle barn and through dress, personal presentation and conduct in the Show Ring. Sponsored by **Curtis Haworth in Memory of his father Gerry Haworth**

##### 5.3 Breeders Herd, Premier Breeder and Exhibitor:

In order for an exhibitor to enter in a Breeders Herd class, both sexes must be represented and entered in another class at the exhibition. Limited to one (1) exhibit per exhibitor.

**Premier Breeder:** Points for this award go to the registered breeders unit for animals shown in single classes. To be eligible for this award, the breeder must exhibit at the show. **Joint breeders are separate entities**

**Premier Exhibitor:** Points will be awarded to the show string exhibit (breeding unit) from which the animals are exhibited in single classes. Related parties either through partnership or among family relationship can pool points towards the Premier Exhibitor Award.

Premier Exhibitor points will be based on points awarded to the first six (6) places in the Single Breeding Classes on the following basis:

1<sup>st</sup>: 6 points    2<sup>nd</sup>: 5 points    3<sup>rd</sup>: 4 points

4<sup>th</sup>: 3 points    5<sup>th</sup>: 2 points    6<sup>th</sup>: 1 point

(Grand Champion and Reserve Grand Champion do not gain additional points.) In the event of a tie, the exhibitor with the highest placing in the Breeders Herd Class will be declared the winner; **Points from a maximum of 6 (six) head are to be used to calculate Premier Breeder and Premier Exhibitor total points**



S C S M  
H H I H G T L  
O A M E E I O  
R R M R L W  
A T O E E B B  
N H L N F V R L  
G O A T O I E I  
U R I A R E E N  
S N S L D H D E

S C S M  
H H I H G T L  
O A M E E I O  
R R M R L W  
A T O E E B B  
N H L N F V R L  
G O A T O I E I  
U R I A R E E N  
S N S L D H D E

08 29 50 71 92 113 134 155 **FEMALE:**  
CALF CHAMPION & RESERVE Ribbons only.  
1<sup>st</sup>, & 2<sup>nd</sup> place winners in above 2 classes eligible

09 30 51 72 93 114 135 156 **FEMALE:**  
Grand & Reserve Champion Ribbons only. 1<sup>st</sup> &  
2<sup>nd</sup> place winners from Calf, Junior & Senior  
Female Champion classes.

10 31 52 73 94 115 136 157 **SENIOR BULL**  
**CALF:** born January 1 to January 31<sup>st</sup> 2018. If  
this calf is not shown in cow/ calf class, then this  
calf must be weaned.

11 32 53 74 95 116 137 158 **JUNIOR BULL**  
**CALF:** born on or after February 1<sup>st</sup> 2018  
minimum of 3 months of age on day of judging If  
this calf is not shown in cow/calf class, then this  
calf must be weaned.

12 33 54 75 96 117 138 159 **BULL:**  
CALF CHAMPION AND RESERVE Ribbons only.  
1<sup>st</sup>, & 2<sup>nd</sup> place winners in above 2 classes eligible

13 34 55 76 97 118 139 160 **YEARLING BULL:**  
born January 1<sup>st</sup>, to December 31<sup>st</sup>, 2017.

14 35 56 77 98 119 140 161 **BULL:**  
JUNIOR CHAMPION AND RESERVE Ribbons  
only. 1<sup>st</sup>, & 2<sup>nd</sup> place winners in above class eligible

15 36 57 78 99 120 141 162 **BULL (2 year**  
**old):** born January 1<sup>st</sup>, to December 31<sup>st</sup>, 2016

16 37 58 79 100 121 142 163 **BULL:**  
SENIOR CHAMPION AND RESERVE Ribbons  
only. 1<sup>st</sup>, & 2<sup>nd</sup> place winners in above class eligible

17 38 59 80 101 122 143 164 **BULL:**  
Grand and Reserve Champion. Ribbons only.  
1<sup>st</sup> & 2<sup>nd</sup> place winners of Calf, Junior & Senior  
Champion Bull classes.

18 39 60 81 102 123 144 165 **BREEDERS**  
**HERD:** A group of 4 animals bred by the exhibitor,  
both sexes represented, must be exhibited in  
previous classes. At least one animal owned by  
the exhibitor.

Limited to one exhibit per exhibitor.

**ENTRY FEE: \$21.40**

Prize Money: 1<sup>st</sup>:\$60, 2<sup>nd</sup>:\$40, 3<sup>rd</sup>:\$20

19 40 61 82 103 124 145 166 **GET OF SIRE:**  
A group of 3 animals from the same sire, both  
sexes represented, **at least one animal owned by**  
**the exhibitor.** Animals must be shown in previous  
classes. Limited to one exhibit per exhibitor.

**ENTRY FEE: \$21.40**

Prize Money: 1<sup>st</sup>:\$60, 2<sup>nd</sup>:\$40, 3<sup>rd</sup>:\$20

20 41 62 83 104 125 146 167 **TWO BULLS:**  
any age combination. Bred or born the property of  
exhibitor. **ENTRY FEE: \$21.40**

Prize Money: 1<sup>st</sup>:\$60, 2<sup>nd</sup>:\$40, 3<sup>rd</sup>:\$20

21 42 63 84 105 126 147 168 **PROGENY OF**  
**DAM:** Two animals either sex, bred and owned by  
the exhibitor. Animals must be shown in previous  
classes. **ENTRY FEE: \$21.40 (tax included)**

Prize Money: 1<sup>st</sup>:\$60, 2<sup>nd</sup>:\$40, 3<sup>rd</sup>:\$20

**FUTURITY "STARS OF THE FUTURE"**  
**ALL BREED CLASSIC**

**Chairperson: Jamie Felhauer**

Entries must be shown in open classes to be eligible to  
enter Stars of the Future and Sires of Tomorrow classes

**170. Futurity "Stars of the Future"**

All Breeds Classic First Year

**Entry Fee: \$37.45**

1st year female calf born in calendar year  
Grand Champion Vest Jacket sponsored by

**Great West Equipment**

Banner: **BMO,**

Reserve Grand Champion

Vest Jacket sponsored by **Diana's Monogramming**

Banner: **McLeery Ranch**

Prize money: 1st \$150.00, 2nd \$ 50.00

**171. Futurity “Stars of the Future”**

All Breeds Classic Second Year

**Entry Fee - \$37.45**

2<sup>nd</sup> Year Bred Heifer (must be same animal as last year’s calf).

Grand Champion Vest Jacket sponsored by **Hornby Equipment Ltd.**

Banner: **Rafter T Enterprises,**

Reserve Grand Champion Vest Jacket sponsored by **Poplar Meadows**

Banner: **Diana’s Monogramming**

Prize money: 1st \$150.00, 2nd \$ 50.00

**172. Futurity “Stars of the Future”**

All Breeds Classic Third Year

Supreme Champion Cow / Calf

**Entry Fee - \$37.45**

Cow & Natural calf at foot (cow must be same animal as first year calf). Grand Champion Pair will be determined

by Cow & Natural calf at foot. Grand Champion Pair will be determined by the points awarded in third year class combined with the accumulated aggregate points over the first 2 years.

Grand Champion Vest Jacket sponsored by:

**Great West Equipment Ltd**

Banner: **Doug & Jamie Felhauer**

Reserve Grand Champion Vest Jacket sponsored by: **Great West Equipment Ltd,**

Banner: **AB. / B.C. Gelbvieh Association**

**Minimum payment after the 3<sup>rd</sup> year.**

**Grand Champion Pair - \$1250.00**

**Reserve Grand Champion Pair - \$625.00**

**“NOTE” Prize monies dependant on total purse**

**173. Sires of Tomorrow- All Breeds Classic**

Bull Calves (Calendar year calves)

**Entry fee - \$37.45**

Grand Champion Vest Jacket sponsored by

**Doug & Jamie Felhauer**

Banner: **Popular Meadows**

Reserve Grand Champion Vest Jacket sponsored by: **Armstrong Veterinary Services**

Banner: **BMO,**

**Prize Money 1<sup>st</sup> \$500.00 2<sup>nd</sup> \$250.00**

**3<sup>rd</sup> \$150.00**

**174. Lowline: Futurity “Stars of the Future”**

**Entry Fee: \$37.45** Ribbons Only

1<sup>st</sup> year female calf

**175. Lowline: Futurity “Stars of the Future”**

**Entry Fee - \$37.45**

2<sup>nd</sup> Year Bred Heifer (must be same animal as last year’s calf). Ribbons Only

**176. Lowline: Futurity “Stars of the Future”**

**Entry Fee - \$37.45** Ribbons Only

Classic Third Year Supreme Champion Cow /

Calf

Banner Sponsored by: Canadian Lowline Association

**177. Lowline: Sires of Tomorrow**

Bull Calves (Calendar year calves)

**Entry fee - \$37.45** Ribbons Only

Banner Sponsored by: Canadian Lowline Association

**STARS OF THE FUTURE” SPONSORS:**

AB. / B.C. GELBVIEH ASSOCIATION

B.C. ANGUS ASSOCIATION

B.C. CHAROLAIS ASSOCIATION

B.C. SHORTHORN ASSOCIATION

B.C. SIMMENTAL ASSOCIATION

N.O.L.A

SURE CROP FEEDS, GRINDROD

**BEEF SPONSORS**

GREAT WEST EQUIPMENT

**SUPREME CHAMPION OF BREEDS SHOW**

**178. Supreme Champion Female.**

**Prize Money - \$200.00**

**Trophy sponsored by Mark Wagner**

Banner for Supreme Champion Female donated by **Schweb Family Cattle**

**Buckle sponsored by Brian & Laurie Postill**

**179. Supreme Champion Bull**

**Prize Money - \$200.00**

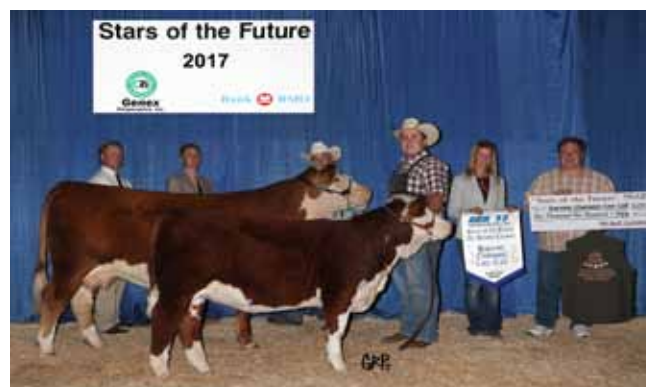
**Trophy sponsored by Doug Hunt**

Banner for Supreme Champion Bull donated by **Rafter T Enterprise**

**Buckle sponsored by Pinnacle View Limousin**

**180. ALL BREEDS - HERDSMEN COMPETITION**

Open to Herdsmen or Owners/Exhibitors: Name contestant on entry form. Exhibiting 5 or more animals in any one breed. For best display, based on general neatness and grooming of attendants, co-operation in overall operation of the beef show for an all day operation 7 am to 8 pm  
Ribbons 1<sup>st</sup> to 3<sup>rd</sup> place - 1<sup>st</sup> \$100



**WJP Chianti MVP 123C**  
Owned and Exhibited by **Billy Paul.**  
Photo by Grant Rolston



## ALL BREEDS - JUNIOR SHOW

**Chairperson: Jamie Felhauer**

**COMMITTEE:** All Beef Committee Breed Reps.

Please read All Beef Rules page 12-15

**Entry fee - \$5.35 per class plus Exhibitors Ticket**

**Exhibitor Tickets (tax included)**

**Student \$21.40**

**Child 6 - 12 \$ 5.35**

**PRIZE MONEY: 1<sup>st</sup>: \$30, 2<sup>nd</sup>: \$25, 3<sup>rd</sup>: \$20: 4<sup>th</sup>: \$15, 5<sup>th</sup>: \$10. Ribbons to 5<sup>th</sup> place.**

RBC Wealth Management \$1000.00 Junior Beef Scholarship 2017 Winner.: Katherin Dolliver

### CCIA TAGS ARE MANDATORY ON ALL CATTLE.

#### RULES:

1. The age limit for exhibitors is minimum of 9 years, maximum of 21 years in the calendar year (except pee wee showmanship).
2. No requirement for Junior Association membership.
3. Where required a copy of the Lease papers must accompany the entry forms.
4. If more than one entry in a class another Junior must assist. (Maximum of two entries).
5. Animal(s) can be shown in regular open classes.

### ANIMALS MUST BE PREPARED BY JUNIOR MEMBER.

**Fitting Classes:** Does not require ownership of animal

181. **SENIOR FITTING CLASS:** Age 17 – 21.
182. **SENIOR SHOWMANSHIP:** Age 17 - 21
183. **INTERMEDIATE FITTING CLASS:** Age 13 – 16
184. **INTERMEDIATE SHOWMANSHIP:** Age 13 - 16
185. **JUNIOR FITTING CLASS:** Age 9 – 12
186. **JUNIOR SHOWMANSHIP:** Age 9 – 12
187. **Pee Wee Showmanship:** Age 8 years & under MUST be accompanied by an adult (no entry fee, Ribbons only) Sponsored by Spady Farm

These Trophies will be awarded based on the combined placing of both the Fitting AND Showmanship Classes:  
**Senior Showing and Fitting - Juday Livestock**  
**Intermediate Showing & Fitting: S Bar D Simmental**  
**Junior Showing & Fitting: Volcano Valley**  
**Shorthorns**

**RULES:** in the following classes #188 through to #195 the Junior must own or lease the animal(s) shown or be owned by the family farm. The Juniors may in their placing accrue Aggregate Points for Trophy Buckle. Animals entered in classes 188 through to 195 may not enter classes 196 through to 195.

188. **FEMALE:** Purebred born prior to January 1<sup>st</sup>, 2016 with her own 2018 natural calf at foot. Cow and calf to be shown as a unit
189. **FEMALE:** Purebred born in 2016 with her own 2018 natural calf at foot. Cow and calf to be shown as a unit
190. **SENIOR CHAMPION AND RESERVE** Ribbons only. 1<sup>st</sup> & 2<sup>nd</sup> place winners in above class eligible
191. **PUREBRED YEARLING HEIFER:** Purebred born in 2017.
192. **HEIFER CALF:** Purebred born in 2018
193. **CHAMPION & RESERVE JUNIOR CHAMPION** 1<sup>st</sup> & 2<sup>nd</sup> place winners 191 & 192
194. **CHAMPION & RESERVE CHAMPION FEMALE:** 1<sup>st</sup> & 2<sup>nd</sup> winners in 190 & 193. Ribbons only.
195. **Bull Calf:** born in 2018

**RULES:** In the following classes 196 through to 199 the junior does not have to be the registered owner and the animal(s) do not have to be owned by the family farm. The Juniors may in their placing accrue Aggregate Points for Trophy Buckle. Animals entered in classes 196 through to 199 may not enter classes 188 through to 195.

196. **FEMALE:** Purebred & Commercial born prior to January 1<sup>st</sup>, 2016 with her own 2018 natural calf at foot. Cow & calf to be shown as a unit
197. **FEMALE:** Purebred & Commercial born in 2016 with her own 2018 natural calf at foot. Cow & calf to be shown as a unit
198. **YEARLING HEIFER:** Purebred & Commercial born in 2017.
199. **HEIFER CALF:** Purebred & Commercial: born in 2018

Haystack says:  
 Stop by the 4-H Tent  
 and check out all the  
 fun interactive  
 games they have





### JUNIOR BEEF SHOW SPECIALS

Grand Champion Female: **Gerry's Repair & Service:**  
Reserve Champion Female: **McLeery Ranch:**  
Junior Champion & Reserve Champion Fitting:  
**Coldstream Ranch**  
Intermediate Champion & Reserve Champion Fitting:  
**Coldstream Ranch**  
Senior Champion & Reserve Champion Fitting:  
**Coldstream Ranch**  
Junior Champion Showman: **Askews Foods**  
Reserve Champion Junior Showman:  
**Coldstream Ranch**  
Intermediate Champion Showman:  
**Coldstream Ranch**  
Reserve Champion Intermediate Showman:  
**Coldstream Ranch**  
Senior Champion Showman:  
**Jack Black Memorial Showman: P. Black & Family**  
Reserve Champion Senior Showman:  
**Coldstream Ranch**

### BUCKLES

Junior Aggregate Trophy Buckle: **Harvest Ranch Tom deWaal**  
Intermediate Aggregate Trophy Buckle  
**Doug & Jamie Felhauer.**  
Senior Aggregate Trophy Buckle **Semiahmoo Shorthorns, G & M Wood**

Junior Beef Ambassador Trophy Buckle:  
This trophy buckle will be awarded to a Junior Exhibitor who best promotes the Beef Industry through personal presentation and friendliness to the public in the cattle barns and through dress, personal presentation and conduct in the show ring. Donated by **Ali Haworth**

### ANGUS SPECIALS

Grand Champion Aberdeen Angus Bull: **Parkland Angus Ranch**  
Grand Champion Female **Southern Interior Angus Breeders**  
Champion Senior Heifer Calf: **Bill Marshall Memorial Trophy:**  
Banner for Premier Breeder Premier Exhibitor :  
**B.C. Angus Association**  
Banner for Grand Champion Angus Bull:  
**Harvest Angus**  
Banner for Grand Champion Female:  
**Blast Angus**

### SHORTHORN SPECIALS

Grand Champion Shorthorn Female: **Mary Bishop Memorial Trophy**  
Grand Champion Shorthorn Bull: **Hackmore Trading Post Trophy Bill, Chris & Midge Paterson,**  
Best B.C. Bred Shorthorn Bull: **Gyaglen Trophy Tom Bishop's daughters**  
Banner for Premier Breeder, Premier Exhibitor  
**Spady Farms**  
Banner for Grand Champion Shorthorn Bull:  
**Interior Provincial Exhibition**  
Banner for Grand Champion Shorthorn Female:  
**Interior Provincial Exhibition**

### CHAROLAIS SPECIALS

B.C.A.I. Trophy: Premier Breeder  
Scarr Industries Trophy: Premier Exhibitor  
Howie Weiss Memorial Trophy: Best BC Bred Female  
Canadian Charolais Banner:  
Grand Champion Female

### SIMMENTAL SPECIALS

Premier Breeder, **Interior Provincial Exhibition**  
Premier Exhibitor: **Interior Provincial Exhibition**  
Grand Champion Simmental Bull:  
**Ridgeline Cattle Co**  
Grand Champion Simmental Female :  
**Ridgeline Cattle Co.**  
Reserve Grand Champion Bull:  
**Interior Provincial Exhibition**  
Reserve Grand Champion Female:  
**Interior Provincial Exhibition**

### HEREFORD SPECIALS

Get of Sire **Harold & Ruby Somerset Trophy:**  
Grand Champion Hereford Bull **Gordon Lyster Trophy:** Premier Breeder **Kalwood Tray**  
Premier Breeder, **B.C. Livestock Producers Co-operative Assoc.**  
Premier Exhibitor: **Copper Creek Ranch**  
Grand Champion Bull: **Ownership Identification Inc.**  
Reserve Grand Champion Bull: **WestGen**  
Grand Champion Female:  
**Greenbelt Embryo Transfer Services**  
Reserve Grand Champion Female: **IPE**  
Breeders Herd **Ownership Identification Inc.**  
Two Bulls, **IPE**  
Get of Sire, **IPE**  
Progeny of Dam,  
**Thompson Valley Hereford Breeders**

**GELBVIEWH**

Premier Exhibitor & Premier Breeder: **Clint Ellis**

**Cattle**

Grand Champion Bull Donated by: **Berthot Gelbvieh**  
Rob & Sharon Berthot)

Reserve Grand Champion Bull

**Interior Provincial Exhibition**

Grand Champion Female: **Keriness Gelbvieh**

Senior Champion Gelbvieh Bull :**Gold Bar Gelbvieh**

Junior Champion Bull: **R.A.C. Gelbvieh**

Senior Champion Gelbvieh Female: **Jonus**

**Fabrication**

Junior Champion Female: **Dane Ranch** Tatla Lake  
B.C.

Heifer & Bull Calf Champion: **Stockyard Veterinary**  
**Services**, Edmonton, AB.

Bull Calf Champion: **4J Lowlines**,  
Falkland BC.

Heifer Calf Champion: **KT Lowline**,  
Lumby, BC.

Two Bulls, **Fredaro Lowline**  
Enderby, BC

Get of Sire, **Outlaw Acres**  
Vernon BC

Breeders Herd: **Ellison Lowlines**  
Kelowna BC

Progeny of Dam: **Ellison Lowlines**  
Kelowna BC

**LOWLINE SPECIALS**

Premier Breeder: **Butterkup Farms**  
Dunster BC

Premier Exhibitor: **Silverhills Lowline**  
Lumby BC

Grand Champion Bull: **Pinnacle Lowlines**,  
Dunster BC.

Grand Champion Female: **4J Lowlines**,  
Falkland BC.

Reserve Grand Champion Bull: **Butterkup Farms**  
Dunster BC

Reserve Grand Champion Female:  
**Pinnacle Lowline** Dunster BC



**B  
E  
E  
F**

**COUNTRY  
LIFE IN BC**

The agricultural news source in British Columbia since 1915

**SUBSCRIPTION INQUIRIES**

[subscriptions@countrylifeinbc.com](mailto:subscriptions@countrylifeinbc.com)

**ADVERTISING INQUIRIES**

[sales@countrylifeinbc.com](mailto:sales@countrylifeinbc.com)

